

HUNTERS®

HERE TO GET *you* THERE

87 Moor Lane, Bolsover, Chesterfield, S44 6EP

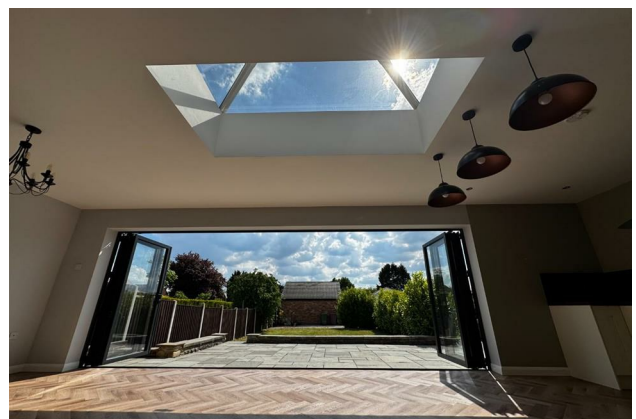
Offers In The Region Of £325,000



HUNTERS[®]

HERE TO GET *you* THERE

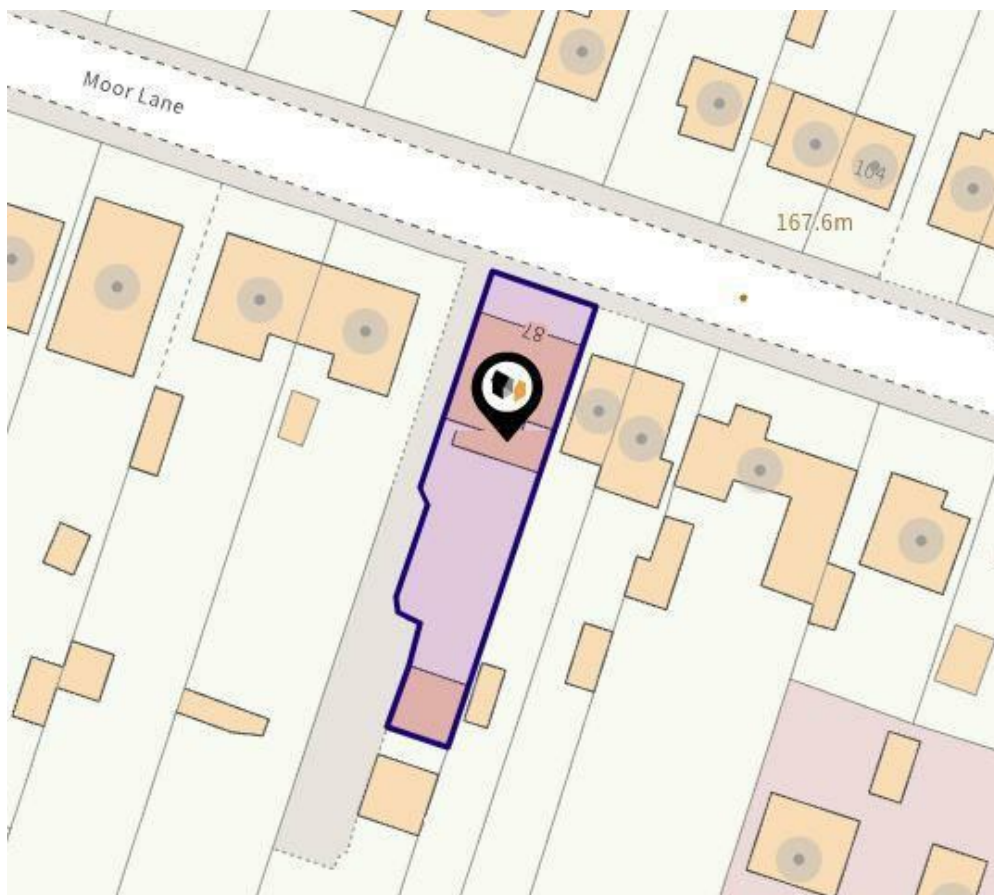
Property Images



HUNTERS[®]

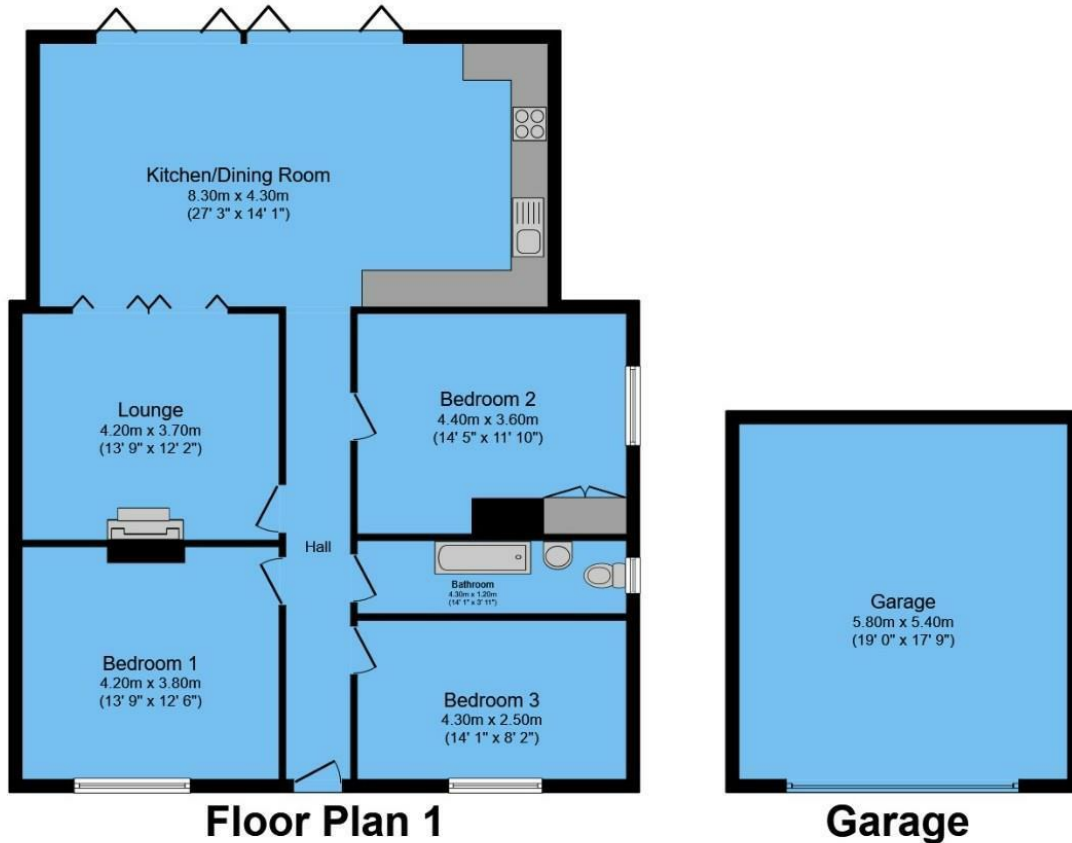
HERE TO GET *you* THERE

Property Images



HUNTERS®

HERE TO GET *you* THERE



Total floor area 142.6 m² (1,535 sq.ft.) approx

This floor plan is for illustrative purposes only. It is not drawn to scale. Any measurements, floor areas (including any total floor area), openings and orientation are approximate. No details are guaranteed, they cannot be relied upon for any purpose and they do not form part of any agreement. No liability is taken for any error, omission or misstatement. A party must rely upon its own inspection(s).
Powered by www.focalagent.com

Energy Efficiency Rating		
	Current	Potential
Very energy efficient - lower running costs		
(92 plus) A		
(81-91) B		82
(69-80) C		
(55-68) D	64	
(39-54) E		
(21-38) F		
(1-20) G		
Not energy efficient - higher running costs		
England & Wales	EU Directive 2002/91/EC	

With NO UPWARD CHAIN is this MODERNISED, EXTENDED, THREE BEDROOM DETACHED BUNGALOW.

Ideally situated for Bolsover Secondary School, easy access to M1 & close to all local amenities including shops, pharmacy, hairdressers, restaurants & more in Bolsover Village plus the famous Bolsover Castle.

Having been recently refurbished, this property comprises of the hallway, lounge with bi-fold doors into the stunning, spacious fitted kitchen diner with doors that fold out into the rear garden, three double bedrooms, and a fully tiled, three piece suite bathroom.

Gas central heating (combi boiler) and uPVC double glazed windows.

Low maintenance rear garden with shared driveway parking to the side which leads down to the SOUTH FACING rear garden, patio & a brick built, double detached garage.

Viewing is essential on this property, call Hunters to book now!

Freehold, Tax Band C, EPC Rating D.

• NO CHAIN • DETACHED DOUBLE GARAGE • AMAZING KITCHEN DINER • MODERN LOUNGE • 3 GOOD SIZED BEDROOMS • FULLY TILED BATHROOM • SOUTH FACING GARDEN • CALL HUNTERS NOW